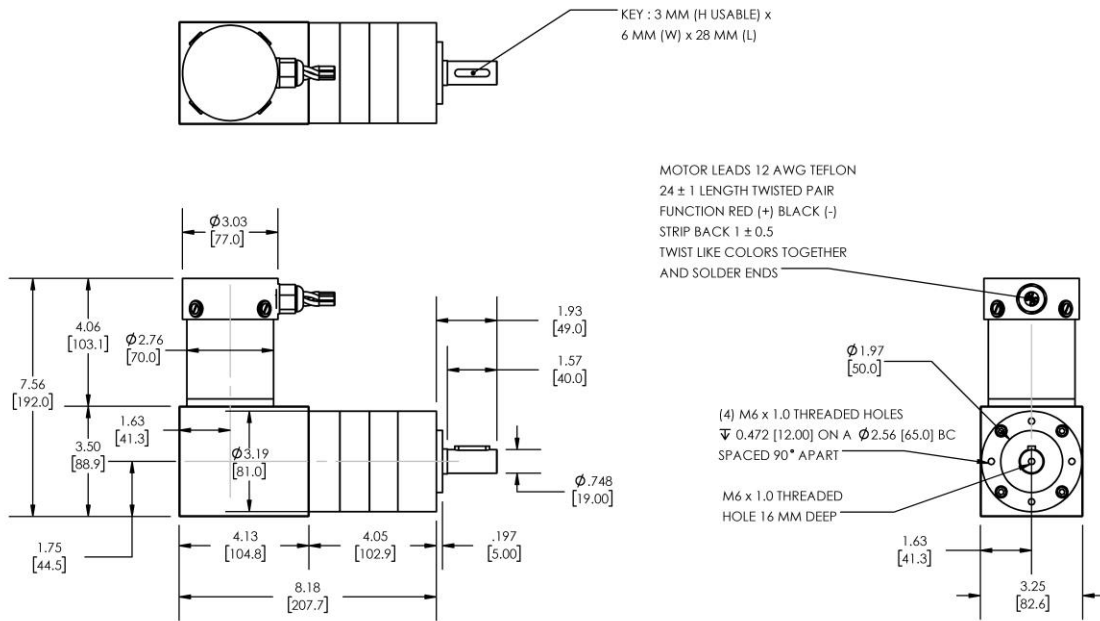




# REVERSIBLE BRUSHED DC RIGHT-ANGLED GEARMOTOR

**Model Number:**

**MMP S27-411G-36V GRA81-150**



DIMENSIONS ARE INCHES [MM] UNLESS OTHERWISE STATED

PLANETARY GEARMOTOR OUTPUT PARAMETERS:	VALUE	UNITS	TOLERANCE
Gearhead Ratio (exact)	149.90 : 1		
Gearhead Shaft Output Speed (at full-load)	20	RPM	MAX
Gearmotor Rated Continuous Torque	761	In-Lbs	MAX
Gearmotor Rated Peak Torque	<b>2124++</b>	In-Lbs	----
Gearhead Standard Backlash	36	Arc Minutes	MAX
Gearhead Efficiency	70%	----	----
Output Shaft Radial Load Capacity	225	Lbs	MAX
Output Shaft Axial Load Capacity	45	Lbs	MAX
Gearmotor Total Weight	14	Lbs	MAX

**++ All Peak Torque values are dependent upon duty. Contact our sales office for details.**

DC MOTOR PERFORMANCE PARAMETERS:	VALUE	UNITS	TOLERANCE
Rated DC Voltage	36	DC VOLTS	----
Rated Continuous Current	10.0	AMPERES	----
No-Load Speed	3564	RPM	MAX
Rated Speed	2989	RPM	+/- 15%
Rated Continuous Power Out	257	WATTS	+/- 15%
Rated Continuous Torque	116	OZ-IN	----
Peak Torque (motor only)	562	OZ-IN	----
No-Load Current	1.46	AMPERES	MAX
Back EMF Constant (Ke)	10.1	V/KRPM	+/- 10%
Torque Constant (Kt)	13.7	OZ-IN/AMP	+/- 10%
DC Armature Resistance	0.58	OHMS	+/- 15%
Armature Inductance	0.47	mH	+/- 15%
Armature temperature	155	DEG. C	MAX

**NOTES:**

- ENCODER & BRAKE OPTIONS AVAILABLE – [FOLLOW THIS LINK FOR DETAILS](#)
- NEMA MOUNTING FLANGE OPTION AVAILABLE – [FOLLOW THIS LINK FOR DETAILS](#)

**MIDWEST MOTION PRODUCTS, INC**

**DESIGN, MANUFACTURING & DISTRIBUTION - MOTION CONTROL EQUIPMENT**

[www.midwestmotion.com](http://www.midwestmotion.com)

email: [sales@midwestmotion.com](mailto:sales@midwestmotion.com)